

# Installation instructions SmartCam

## 1 General instructions

- Please read the installation instructions carefully, before activating the lock.
- Attention: The turning knob may not be operated before assigning closing direction.

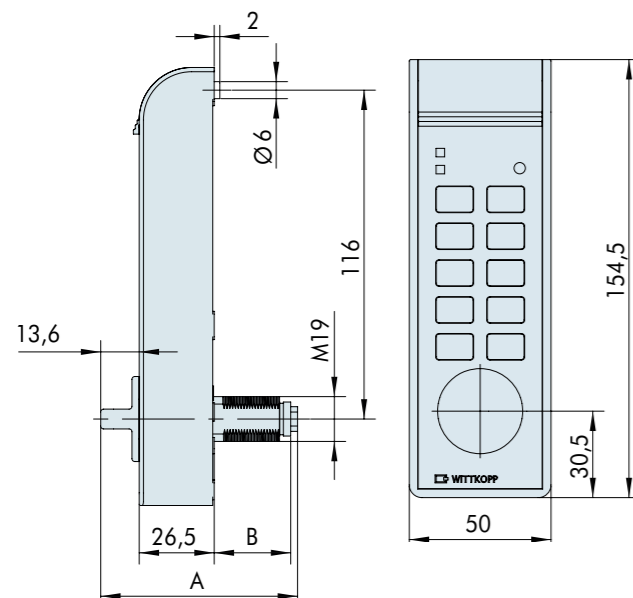
### 1.1 Liability notes

- The mounting of the electronic lock has to be carried out according to the installation instruction.
- By opening the lock cover warranty of the manufacturer will be void.
- Take care that the input unit or the lock and the battery cable should not be damaged.

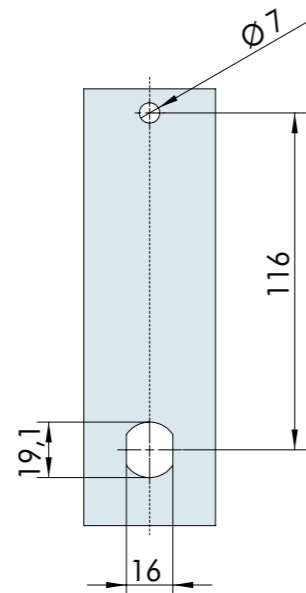
## 2 Mounting

- Various lever versions can be mounted. Check the lock for flawless functioning.
- The electronic lock/mechanical emergency lock is maintenance free in normal domestic and office surroundings. After approx. 10,000 closures it is recommended to carry out a security and functional test of the electronic lock.
- Do not insert any lubricants or other substances into the electronic lock.

### 2.1 Installation dimensions SmartCam



### 2.2 Drill pattern SmartCam



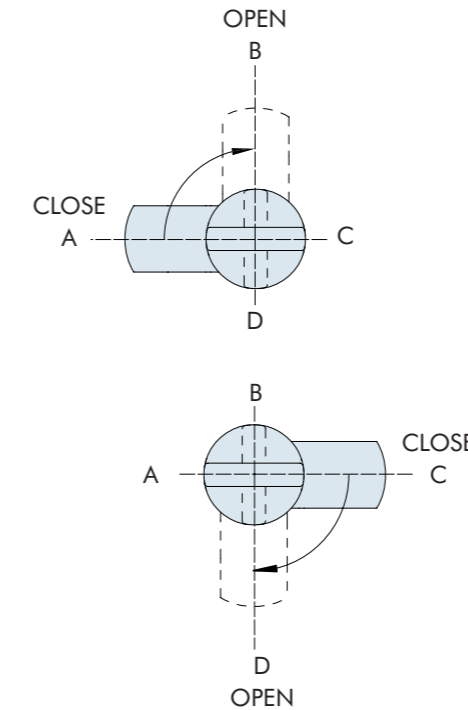
- When using the drilling plan use the graphic in the given measurement

A (mm)	B (mm)	Suitable for dor strengths
56	14	up to 5 mm
69	27	up to 18 mm

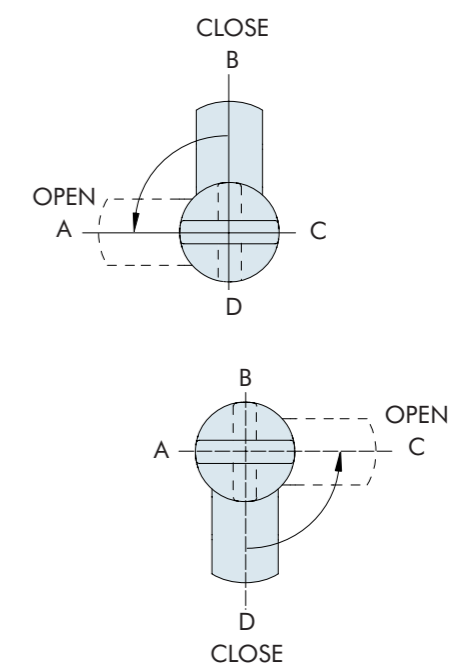
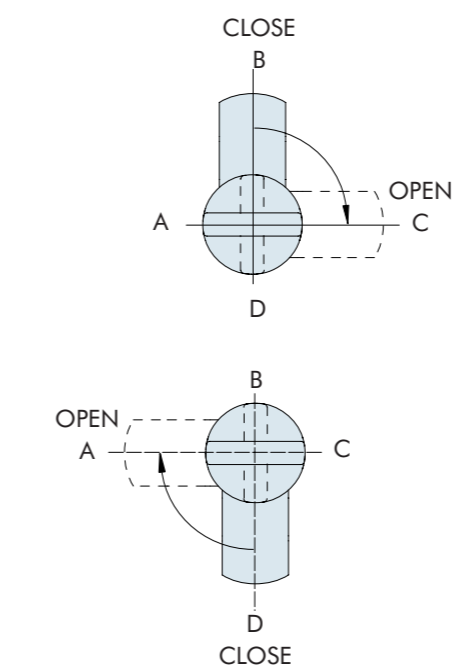
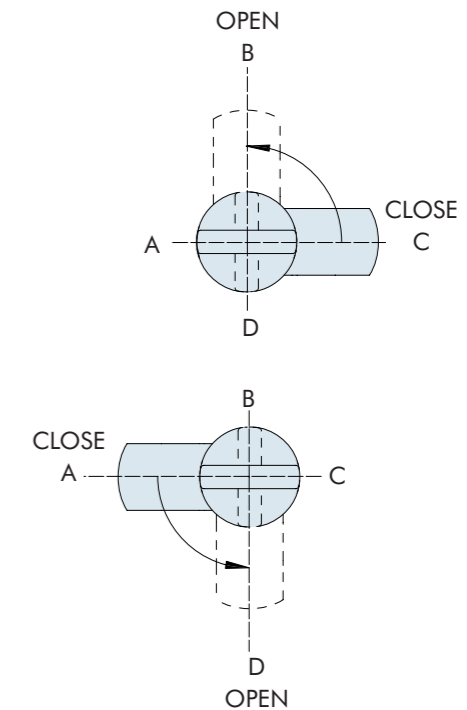
## 3 Closing strokes

### 3.1 Overview closing strokes

- R: right-hand locking



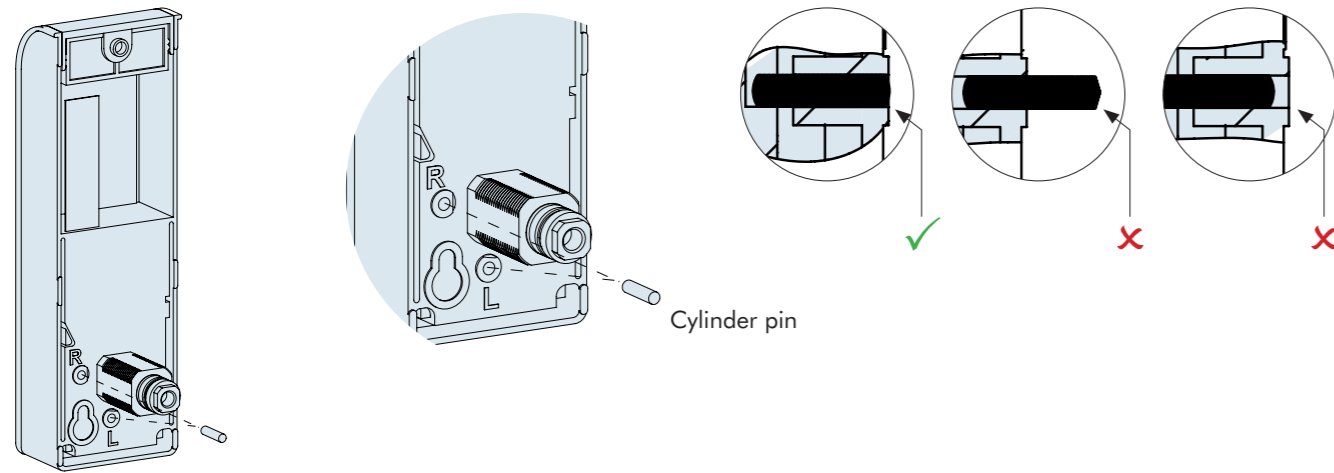
- L: left-hand locking



### 3.2 Adjusting closing stroke

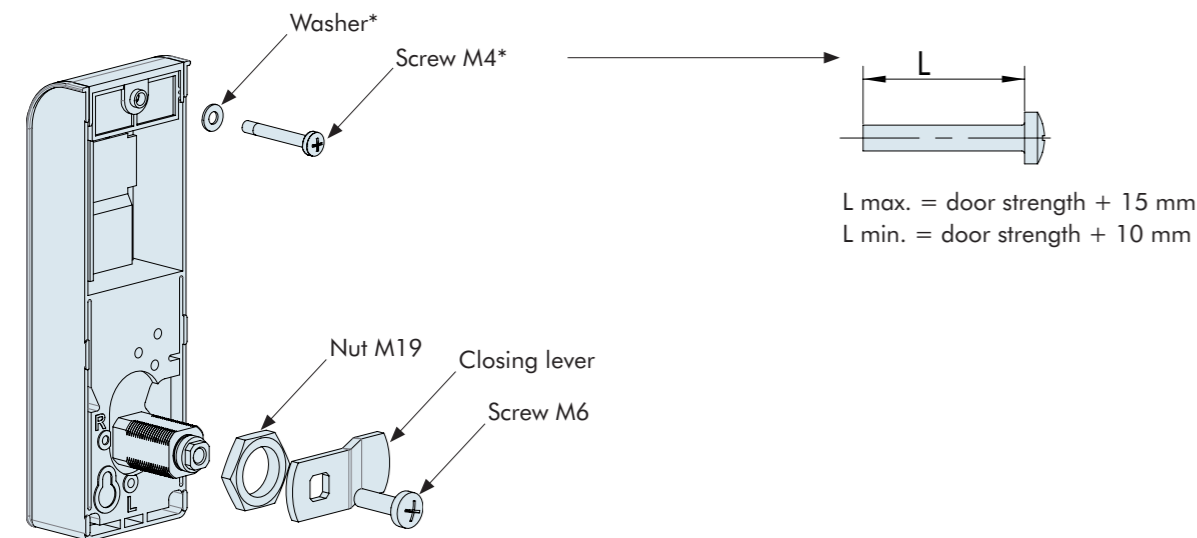
**Attention: turning knob may not be operated before.**

**Closing stroke can not be changed after installing the cylinder pin!**



**⚠ Adjust closing stroke as in 3.1 and push cylinder pin flush in position R (right-hand locking) or position L (left-hand locking).**

### 4 Installation



\* not included in the scope of delivery

- Fix the lock with the screw M4 (length calculation see drawing) and nut M19 to the inner door.
- Turn screw and nut with a maximum turning force of 3,5 – 5nm.
- Independent loosening of the screws has to be avoided. Recommendation: put lock washer underneath the screw's head.
- On the inside of the door put the closing lever onto the square pin in the closing position and fix it with the screw M6.
- Closing lever may not be under pressure or force.
- Keep enough clearance to the closing panel.

### 5 Functional test (when the door is open)

- Carry out a functional test after installing the lock.
- Press and hold the key "8" for eg. 3 seconds. When releasing the key the green LED flashes permanently. Enter the factory code. When delivered the lock is programmed to the operating mode K1/ratio 10.
- The factory codes are as follows:
  - Master factory code: 1-2-3-4-5-6 (valid for all operating modes)
  - Administrator factory code: 6-5-4-3-2-1 (valid for operating mode K1)
- Within 3 seconds turn the knob into the opening position. The bolt swings in (has to happen easily). The lock is opened.
- Close the door at the safe and turn the knob into locking position. **Enter any key.** The lock is closed.